



**DIN VENTILATION**



**DIN VENTILATION**

✉ kontakt@dinventilation.dk  
📍 Hovedvejen 97, 2600 Glostrup  
🌐 www.dinventilation.dk  
☎ +45 77 22 54 84

# **Air Pro V2.0**

Single-room ventilation unit with heat recovery

**User manual**



SAFETY REQUIREMENTS .....	2
INTRODUCTION .....	4
APPLICATION .....	5
PACKING LIST .....	5
TECHNICAL DATA .....	6
DESIGN & OPERATION .....	7
INSTALLATION DRAWING .....	8
OPERATING MODES .....	9
INSTALLATION .....	10
FUNCTION DESCRIPTION .....	14
REMOTE CONTROL .....	15
MASTER-SLAVE FUNCTION .....	16
HOW TO SETUP MASTER-SLAVE .....	17
SETTINGS FOR SLAVE .....	19
MASTER-SLAVE RESET AND CANCELLING .....	19
APP-FUNCTIONS .....	20
APP DOWNLOAD .....	21
APP SETUP .....	22
CANCELLATION OF WIFI-MODE .....	23
MAINTENANCE .....	24
STORAGE AND TRANSPORT REGULATION .....	25
TROUBLESHOOTING .....	26

## ► SAFETY REQUIREMENTS

- Read the user manual carefully before operating or installing the Air Pro V2.0.
- The installation and operation of the unit must be carried out in accordance with this user manual, as well as with all applicable local and national building, electrical, and technical codes and standards.
- The warnings in this user manual must be taken seriously, as they contain vital personal safety information.
- Failure to follow the safety instructions may result in personal injury or damage to the unit.
- Read the user manual carefully and keep it for future reference.
- Children must not play with or service the fan.
- If the power cord is damaged, it must be replaced by the manufacturer or an authorized service partner.
- 
- It is recommended that the fan be installed at least 2.1 meters above the floor.
- Ensure that the fan is positioned so that it cannot draw toxic gases or smoke into the home, for example from wood stoves or fuel-burning appliances.
- Do not attempt to recharge non-rechargeable batteries for the remote control.
- Batteries must be inserted with the correct polarity.
- Remove the batteries from the remote control if the fan will not be used for an extended period.
- Keep the remote control out of reach of children to ensure that they do not swallow the batteries.
- 

## Symbols used in the manual



**WARNING!**



**AVOID!**

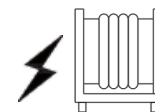
## Safety precautions for unit installation



The fan must be disconnected from the power supply before installation or maintenance.



The fan must not be used outside the temperature range specified in the user manual, nor in aggressive or explosive environments.



Do not place heating equipment or any other devices close to the fan's power cable.



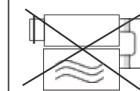
Do not use damaged equipment or cables to connect the fan to the power supply.



Follow the safety regulations for the use of electrical tools when installing the fan.




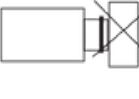


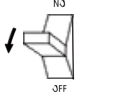
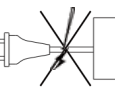
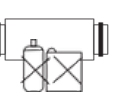
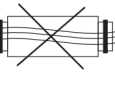
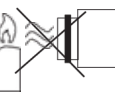
Carefully unpack the fan.



Use the fan only as intended by the manufacturer.

## Safety precautions for installation and use of the Air Pro V2.0

	<p>Do not touch the controller or remote control with wet hands. Do not perform maintenance on the fan with wet hands.</p>
	<p>Do not allow children to operate the fan.</p>
	<p>Do not clean the fan with water. Protect the electrical parts from water ingress.</p>
	<p>Do not block the air duct when the fan is operating.</p>

	<p>Disconnect the fan from the power supply before maintenance.</p>
	<p>Do not damage the power cable while the fan is operating. Do not place objects on the power cable.</p>
	<p>Keep explosive and flammable products away from the fan.</p>
	<p>Do not open a running fan.</p>
	<p>Do not direct the airflow from the fan towards an open flame or candles.</p>

## ► INTRODUCTION

This user manual contains the technical description, operating instructions, installation and mounting guide, as well as technical data for your Air Pro V2.0 single-room ventilation unit with heat recovery.

## ► APPLICATION

- The unit is designed to exchange air in houses, basements, apartments, villas, hotels, cafés, and other residential or public buildings. The unit is equipped with a ceramic heat exchanger and a fan that work together to recover heat while the air is being replaced.
- The unit is designed for through-the-wall installation. Its telescopic design allows for flexible installation according to wall thickness requirements.
- The fan is intended for wall mounting only, not for ceiling installation. The telescopic duct allows installation in walls with a thickness ranging from 250 mm to 470 mm.
- The air transported by the fan must not contain any flammable or explosive chemicals, coarse dust, soot, oil particles, or similar substances.



INSTALLATION AND CONNECTION OPERATIONS MUST ONLY BE CARRIED OUT BY QUALIFIED PERSONNEL AFTER PROPER SAFETY BRIEFING.  
KEEP CHILDREN AWAY FROM THE INSTALLATION AREA OF THE FAN WITHOUT SUPERVISION.

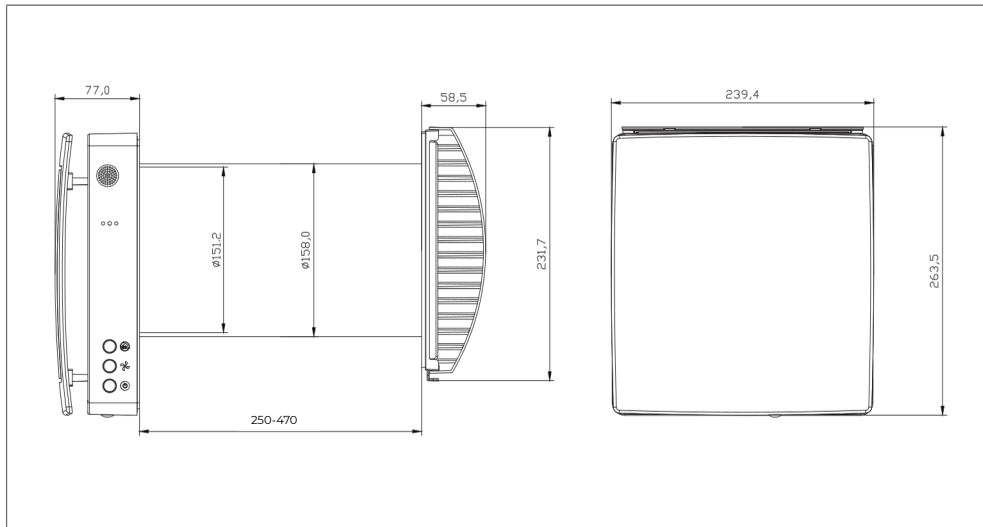
## ► PACKING LIST

Motor	1 stk.
Rainshield	1 stk.
Mounting plate	1 stk.
Remote control	1 stk.
Telescopic duct	1 stk.
Filter set and 5 m power cord with plug	1 stk.

► TECHNICAL DATA

- The unit is designed for indoor use with an ambient temperature range from -20°C to +50°C and a relative humidity below 80%.
- The fan is classified as a Class II electrical appliance.
- The Ingress Protection (IP) rating of the product is IPX4.

Overall dimensions of the unit (mm)



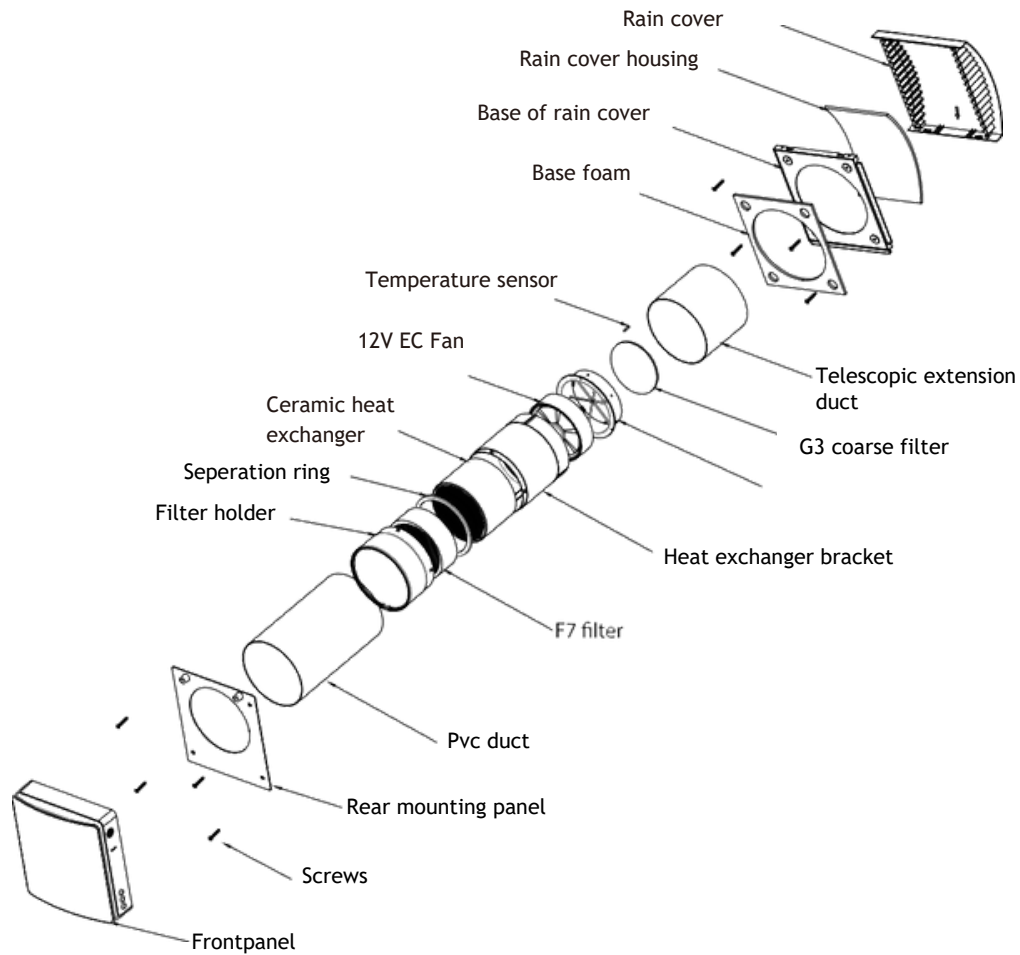
Description	Unit	Value
Voltage	V	100-240
Frequency	Hz	50/60
Current consumption (Sleep mode / 1 / 2 / 3)	W	4,8 / 6 / 7 / 7,8
Current consumption (Sleep mode / 1 / 2 / 3)	A	0,03/0,04/0,05/0,06
Fan speeds	-	Sleepmode-1-2-3
Air duct diameter	Ø	158
Heat recovery efficiency	%	Up to 97
Ingress protection rating (IP class)	-	IPX4
Energy class	-	A
Wireless pairing distance master/slave LoRa wireless connection	M	15
WiFi	2,4 GHz	Yes
Sound level @ 1,5m (Sleep mode / 1 / 2 / 3)	dbA	12/19,97/29/32,7
Airflow (Sleep mode / 1 / 2 / 3) in supply/exhaust mode	m3/h	12/20/40/50
Airflow (Sleep mode / 1 / 2 / 3) in heat recovery mode	m3/h	6/10/20/25
Airflow (Sleep mode / 1 / 2 / 3) in supply/exhaust mode	CFM	7/11,8/23,5/29,4
Airflow (Sleep mode / 1 / 2 / 3) in heat recovery mode	CFM	3,5/5,9/11,8/15
Maximum airflow in boost mode	m3/h	60
Maximum airflow in boost mode	CFM	35
Fan speed (Sleep mode / 1 / 2 / 3)	RPM	700/1000/1550/1800
Fan speed in boost mode	RPM	2200
Net weight	Kg	4,2

Note: The airflow in supply/exhaust mode without the F7 filter is approximately 24/34/56/70 m<sup>3</sup>/h or 14/20/33/41.2 CFM.

► DESIGN AND OPERATION

- The unit consists of a telescopic air duct with an adjustable length that can be adapted to the wall thickness.
- The F7 filter, G3 filter, and the ceramic heat exchanger are located inside the inner duct.
- The filters are designed to clean the supply air and prevent foreign objects from entering the heat exchanger and the fan.
- The ceramic heat exchanger absorbs energy from the exhaust air to heat or cool the incoming supply air.
- The heat exchanger is equipped with a wire handle to facilitate its removal from the unit.

► INSTALLATION DRAWING



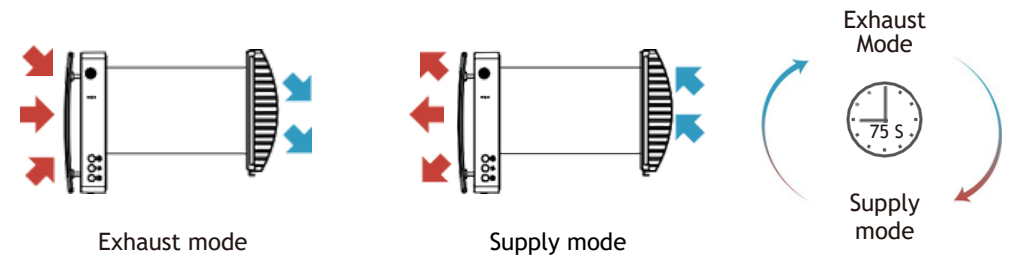
► OPERATING MODES

**Ventilation Mode** - The fan operates in either exhaust or supply mode at a fixed speed. When two interconnected fans are synchronized, one operates in supply mode while the other operates in exhaust mode.

**Heat Recovery Mode** - The fan operates in two 75-second cycles to ensure heat and humidity recovery.

**Interval 1:** Warm, stale air is extracted from the room and passes through the ceramic heat exchanger, which gradually absorbs heat and moisture. After 75 seconds, the fan switches to supply mode.

**Interval 2:** Fresh, cool outdoor air passes through the heat exchanger, absorbing the stored heat and moisture. After 75 seconds, when the heat exchanger becomes cool, the unit switches back to exhaust mode.



**INSTALLATION AND SETUP**



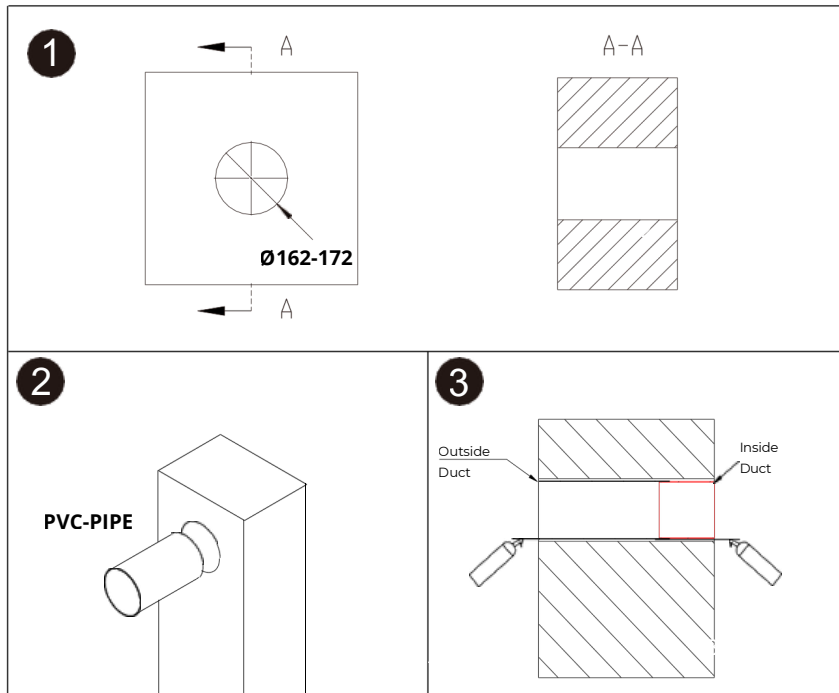
Please read the user manual before installing the fan. To prevent dust buildup and accumulation in the room, the fan must not be installed in locations where the air duct could be blocked by blinds, curtains, drapes, etc. In addition, curtains can obstruct the normal airflow in the room, which may reduce the fan's efficiency.

► **INSTALLATION**



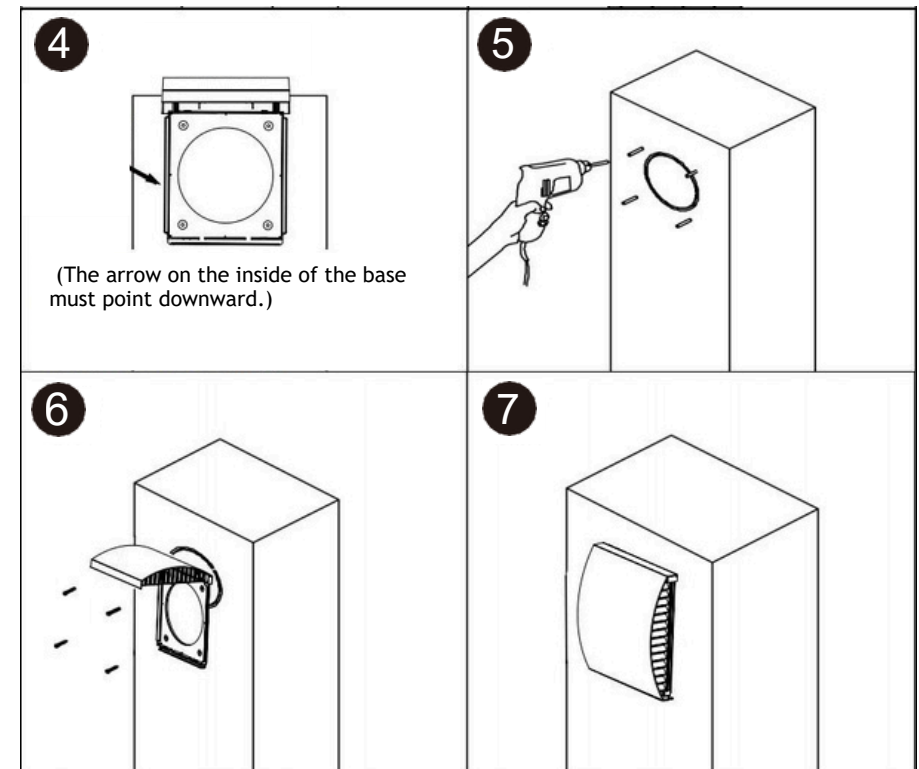
DISCONNECT THE FAN FROM THE POWER SUPPLY BEFORE PERFORMING ANY ELECTRICAL INSTALLATION WORK.  
 THE FAN IS DESIGNED FOR CONNECTION TO A SINGLE-PHASE 100-240V / 50-60HZ POWER SUPPLY.  
 CONNECT THE FAN DIRECTLY TO THE POWER SOCKET.

1. Drill a hole  $\varnothing 162-180\text{mm}$  with a little angle outward to lead possible condensation.
2. Insert the PVC duct into the wall, adjusting the duct length with a saw to match the wall thickness.
3. Fill the gap around the PVC duct and the wall with PU foam or sealant.
4. Finish by applying a silicone seal around the hole, both inside and outside.



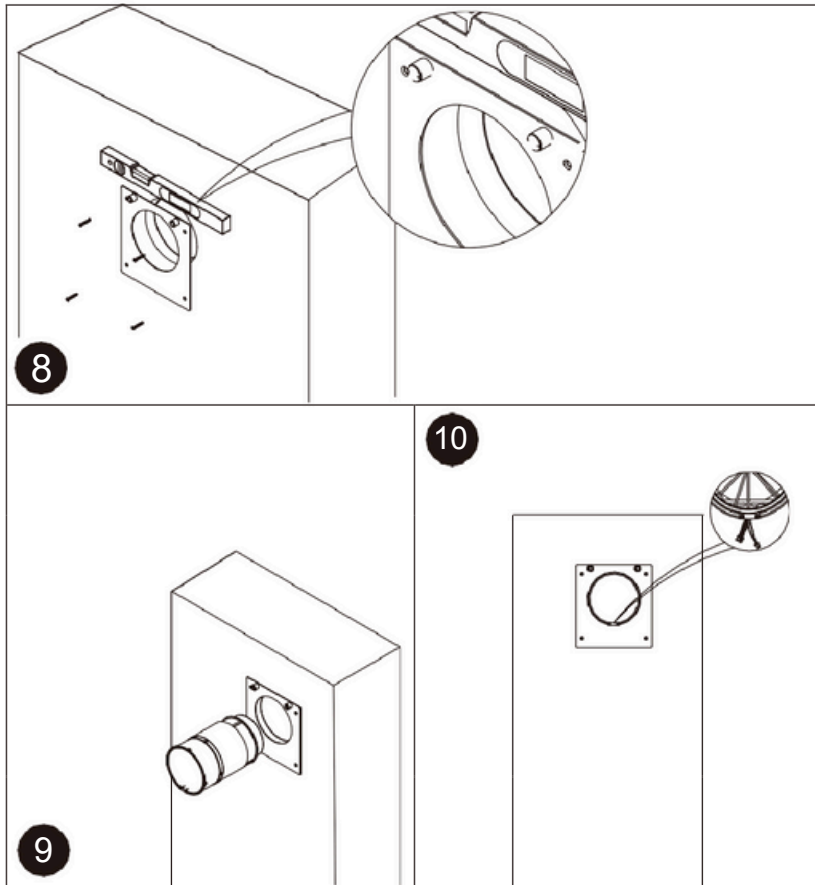
► **OUTSIDE INSTALLATION**

4. Place the rain cover base so it fits the hole and mark the four holes.
5. Pre-drill the holes.
6. Mount the rain cover using wall plugs and screws, then click it into place.



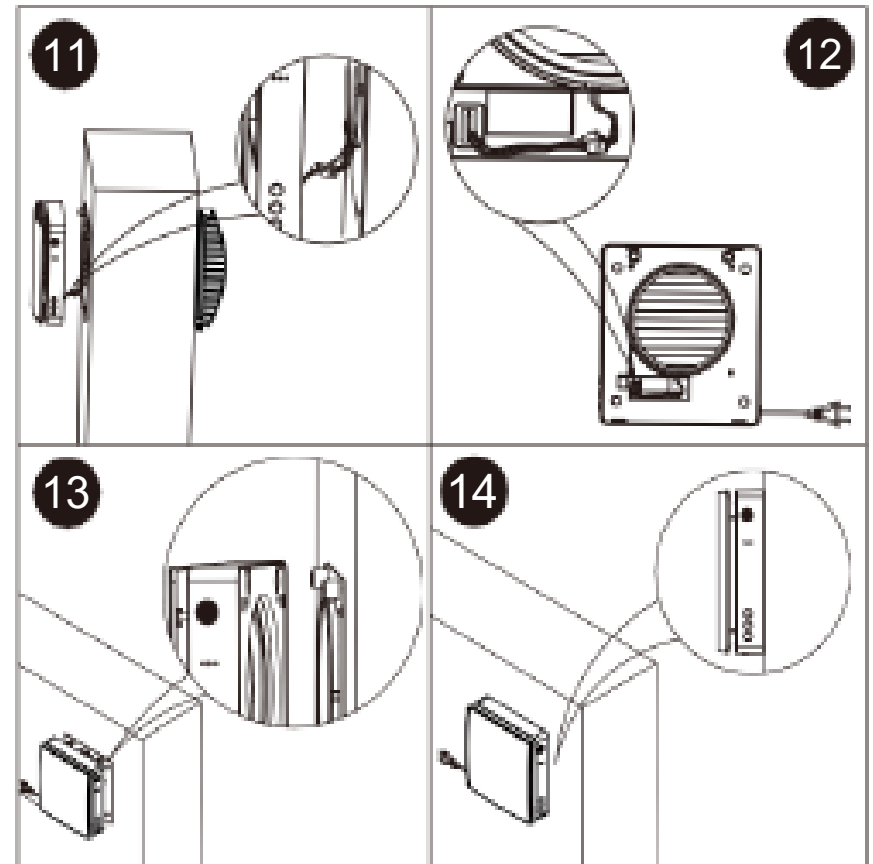
► **INSIDE INSTALLATION**

8. Install the magnetic mounting plate using the supplied wall plugs and screws.
9. Insert the motor into the hole and ensure that the cable inside the inner air duct faces downward, so that the direction matches the marking on the outer duct.
10. Make sure the cables for the connection is pointing downwards

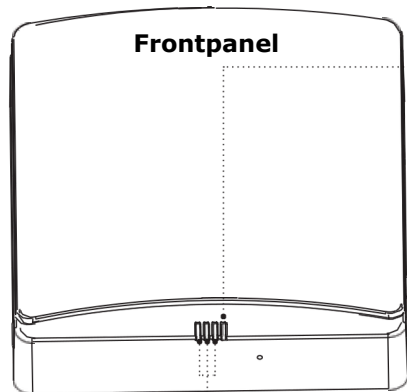


► **INSIDE INSTALLATION**

11. Install the front panel onto the mounting plate indoors and connect the cables from the back of the front panel to the cables from the fan and the temperature sensor.
12. Arrange the cables so that the front panel closes tightly.  
The back of the front panel is equipped with a strong magnet that adheres to the mounting plate.
13. Click the front panel into place and ensure that it is sealed tightly against the wall and the mounting plate.



## ► FUNCTION DESCRIPTION



### Function Light (RGB-LED)

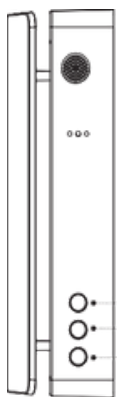
The function light indicates the fan speed with a total of 4 speed levels:

- **Sleep mode:** LED light blinks twice, then turns off.
- **Speed 1:** 1 light on.
- **Speed 2:** 2 lights on.
- **Speed 3:** 3 lights on.

The green light indicates fresh air supply mode.

The red light indicates exhaust mode.

The blue light indicates heat recovery mode (cycles every 75 seconds, alternating between supply and exhaust).



### MODE

On: Allows switching between supply mode, exhaust mode, and heat recovery mode.

### FAN SPEED

On: Allows changing the fan speed between four levels in total.

### ON/OFF

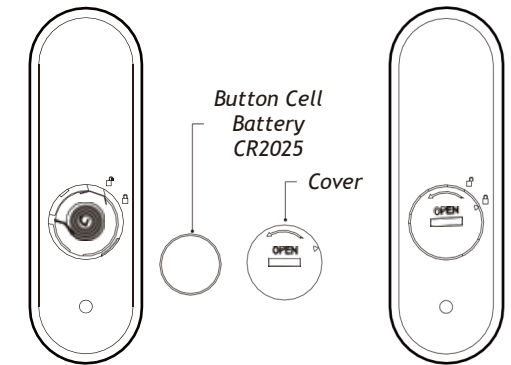
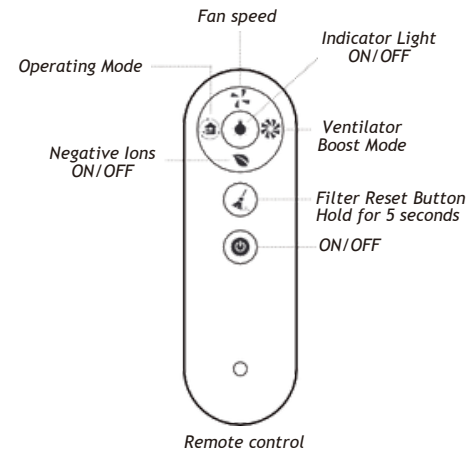
Turn the unit on or off.

### Status Light (RGB-LED) Operating status

1. Blue light on: Pairing is activated and communication between master and slave has been established.
2. Green light on: Wi-Fi function is active, Wi-Fi connection is successful, and the unit can be controlled via the app.
3. Red light on: Filter cleaning alarm - indicates it is time to check or replace the filters.
4. Purple light on: Indicates that the master unit is in master-slave mode, and the master sends synchronization signals to the slave. The unit can be controlled via the app.
5. Yellow light on: Humidity or CO<sub>2</sub> control is active.
6. Blue light blinking slowly: Free cooling is active.
7. Red light blinking three times: Filter cleaning is completed and reset is successful (hold the filter reset button on the remote control).

### Off-status indicator light

1. Blue light blinking slowly: The unit is set as master in pairing mode.
2. Green light blinking slowly: The unit is set as slave in pairing mode.
3. Red light blinking slowly: The unit is in Wi-Fi connection mode.



Insert the battery before using the remote control

## ► REMOTE CONTROL

1. **Fan speed:** Adjust the fan speed on the unit – 4 levels in total.
2. **Operating mode:** Switch between supply mode, exhaust mode, and heat recovery mode.
3. **Negative ion ON/OFF:** Power switch for the negative ion generator (when the ion function is active, it releases negative ions). The negative ion generator must be purchased and installed separately.
4. **Indicator light ON/OFF:** Control the indicator light – turn it on or off.
5. **Ventilator Boost Mode:** Activates boost mode, where the fan operates at maximum speed. After 30 minutes, it will automatically return to the previous setting.
6. **Filter Reset:** Hold the filter reset button on the remote control for 5 seconds. The unit will blink red three times, indicating the filter timer has been reset. (Default reminder: every 1440 hours, i.e. approximately every 2 months). Always remember to check and clean the filters. Hold the filter reset button again for 5 seconds to confirm. It is recommended to replace filters every 3-6 months.
7. **ON/OFF:** Turns the unit on or off.

### Remote Control Uses Infrared Signals

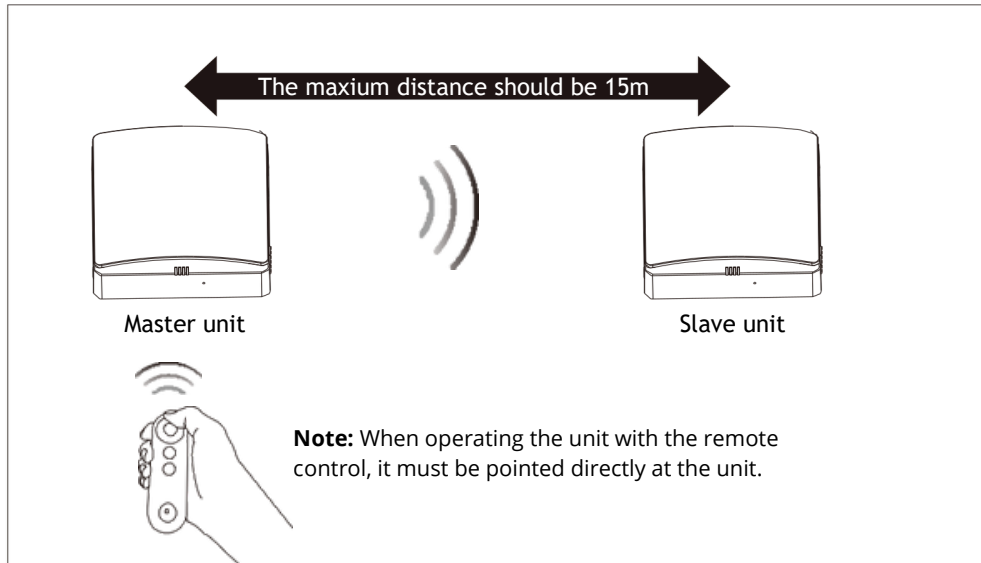
Before using the remote control, insert the battery and screw on the battery cover.

After inserting the CR2025 button cell battery, make sure the battery cover is properly closed with the triangle arrow aligned with the lock symbol (use your hands only, not tools, to avoid damage).

To remove the battery, rotate the battery cover counterclockwise as shown until the triangle aligns with the unlock symbol, then remove the battery.

Store the remote control properly to prevent children from swallowing the battery or causing accidents.

## ► MASTER-SLAVE FUNCTION



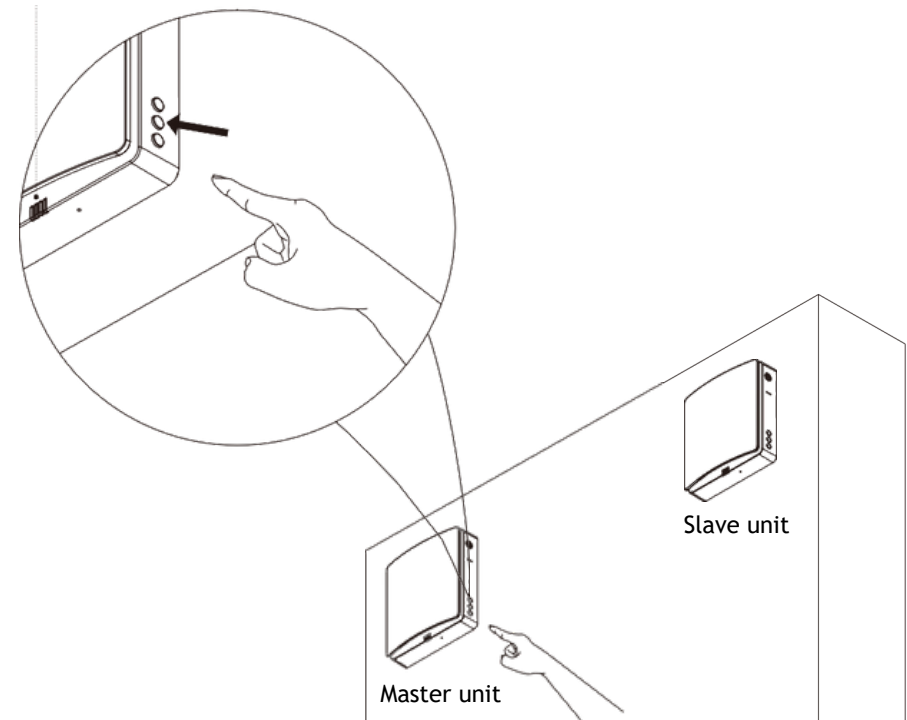
1. Without setting a master/slave role, a single remote control can operate one or multiple units.
2. After assigning a master/slave role, the current remote control can only operate the master unit.
3. The master will then send synchronization signals to the slave (the slave does not receive the remote control signal directly), so the slave's operating mode is synchronized with the master.
4. (The master can control only one slave unit.)
5. In heat recovery mode, the operating direction of the slave fan is opposite to that of the master, while in other modes, the slave fan runs in the same direction as the master.

- The maximum linear, unobstructed communication distance between the master and slave is 15 meters.
- The signal between the master and slave can pass through a 180 mm thick brick wall.

## ► HOW TO SETUP MASTER-SLAVE

### Settings for master-unit

1. Connect the unit to the power supply.
2. Make sure the unit is turned off.
3. Then press and hold the fan speed button on the unit for 5 seconds.
4. The status indicator will start slowly blinking blue.
5. At this point, the unit enters master-slave pairing mode and is set as the master.



## ► SETTINGS FOR SLAVE

1. Connect the unit to the power supply.
2. Make sure the unit is turned off.
3. Then press and hold the mode button on the unit for 5 seconds.
4. The status indicator will start slowly blinking green.
5. At this point, the unit enters master-slave pairing mode and is set as the slave.

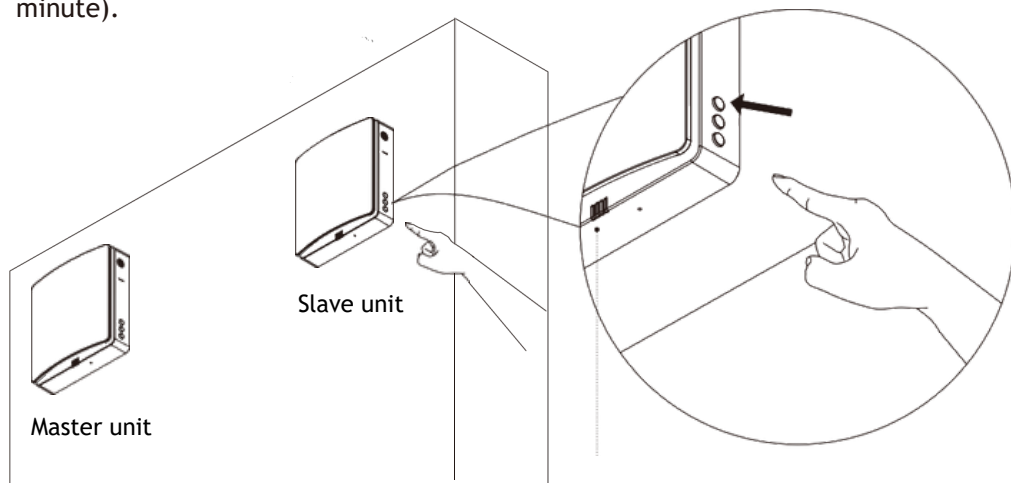
6. The status light on the master will then display blue or purple:

Purple indicates that the units are paired and Wi-Fi is connected.

Blue indicates that the units are paired.

If the master-slave pairing fails, the status lights on both units will blink for one minute and then automatically turn off.

Master-slave pairing must be performed simultaneously (within one minute).



## ► MASTER-SLAVE RESET AND CANCELLATION

Connect the unit to the power supply.

In the OFF state, press and hold the fan speed button on the connected unit for 5 seconds.

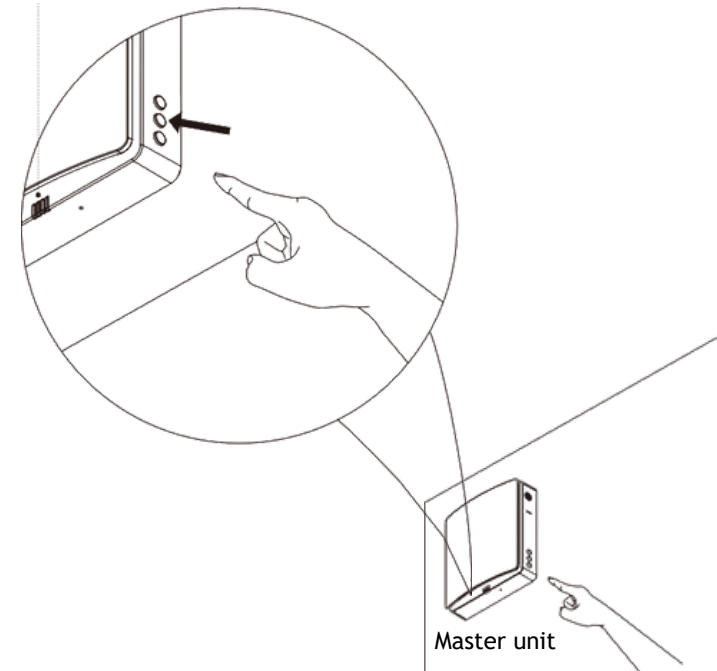
The status indicator will start slowly blinking blue.

At this point, the connected unit enters master-slave pairing mode and is set as the master unit.

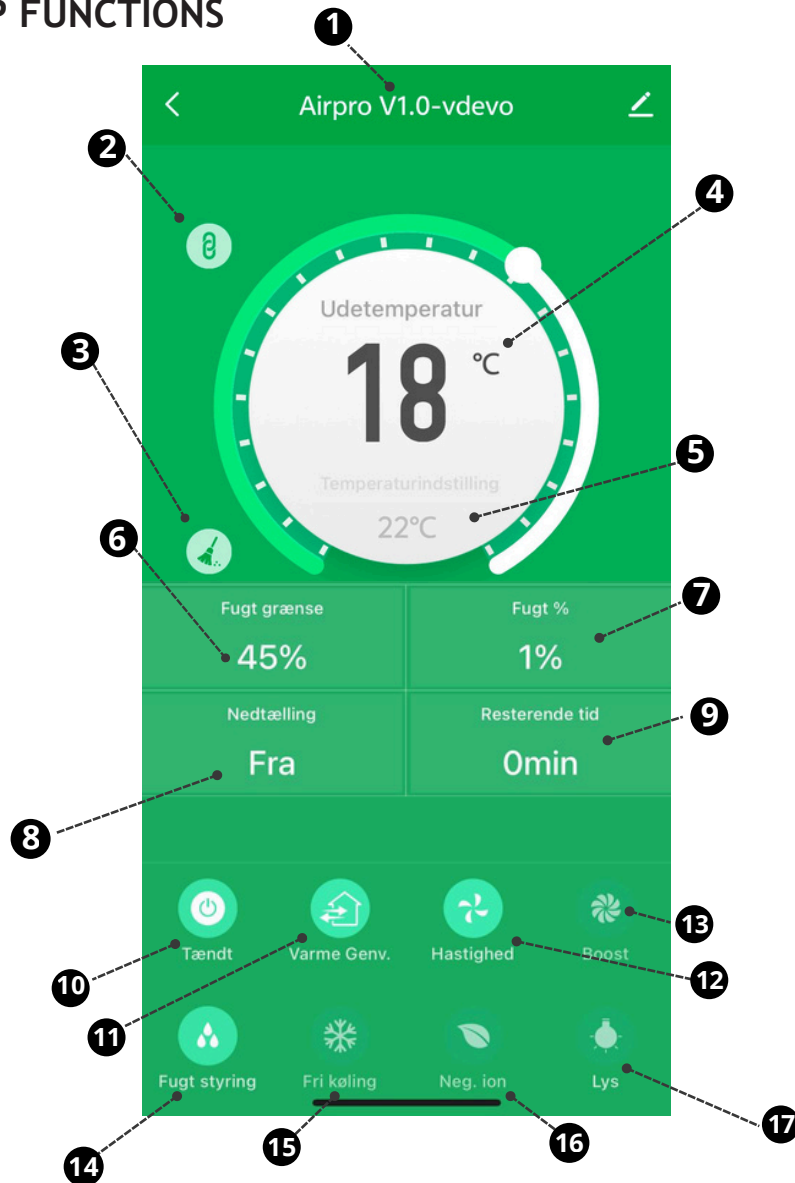
**Wait 2 minutes.**

After this, the unit will reset and restore factory settings with no role assigned.

1. Connect the master unit to the power supply.
2. Make sure the master unit is turned off.
3. Then press and hold the fan speed button on the master unit for 5 seconds.
4. The status indicator will start slowly blinking blue.
5. Wait 2 minutes, after which the connection will be reset.



► APP FUNCTIONS



1. Fan name - The app can connect multiple units. Each unit can have a different name, and the user can freely change the device name
2. Pairing icon - After the units are paired, this icon appears. The slave unit will be shown as offline and cannot be operated directly.
3. Filter alarm - Reminds the user to clean or replace the filters. The icon disappears after resetting.
4. Temperature display - Displays the outdoor temperature when the unit is ON and in supply or heat recovery mode. Not displayed in exhaust mode.
5. Free cooling temperature setting - When the outdoor air is comfortable, the unit can operate in supply mode to provide fresh air without heat recovery. This is called free cooling. Users can set the minimum outdoor temperature to activate this function. Setting range: 10°C to 29°C.
6. Humidity setting - During heat recovery mode, when the humidity exceeds the set value, the unit switches to exhaust mode to remove humid air and prevent it from spreading to other rooms. The unit will return to the previous operating mode once indoor humidity drops below the set threshold minus 5%. Humidity setting range: 40-95%.
7. Current humidity (%)
8. Countdown timer
9. Remaining countdown time
10. Turn the unit ON/OFF
11. Mode - (Supply mode, Exhaust mode, Heat recovery mode)
12. Fan speed - Sleep mode, Level 1, 2, and 3
13. Fan boost function - The unit operates at maximum speed.
14. Humidity/CO<sub>2</sub> control ON/OFF
15. Free cooling ON/OFF
16. Negative ions ON/OFF
17. Indicator light ON/OFF



► APP DOWNLOAD

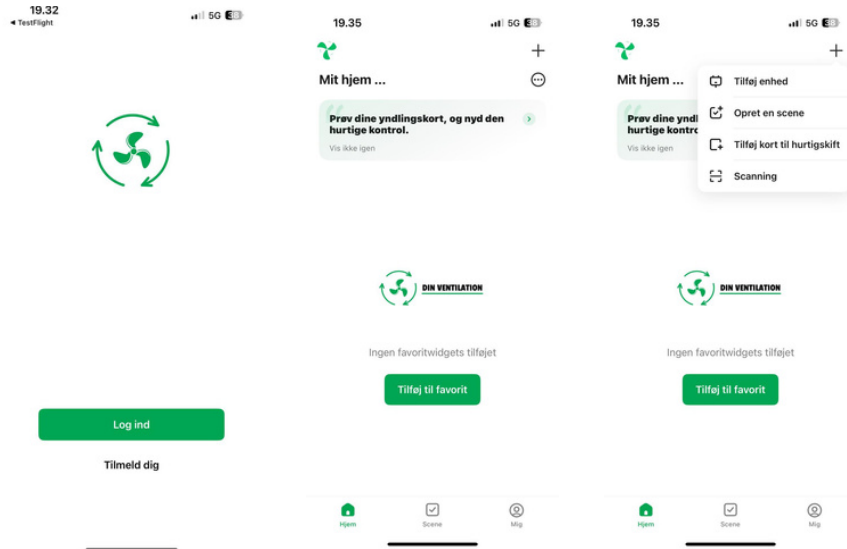
Scan the QR code above to download the app, or search for “Din Ventilation” in the Apple App Store or Google Play Store to install the app. Then use the unit’s Wi-Fi connection to control the device through the app.

If you want to use the voice control function of a smart speaker, scan the same QR code to download the app, or search for “Din Ventilation” in the Apple App Store and Google Play Store to install it.

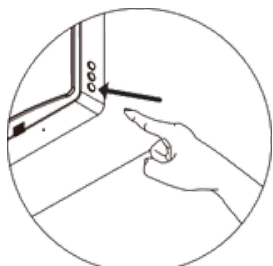
The mobile app can control the unit and supports Google and Alexa smart speaker control functions.

## ► APP SETUP

1. When the app is opened, permission must be granted for Bluetooth, privacy settings, and other required options before the full functionality of the app can be used.
2. Then make sure that your mobile phone is connected to Wi-Fi and that Bluetooth is turned on.



3. Create a user account and log in. Grant the app the necessary permissions



Step 4

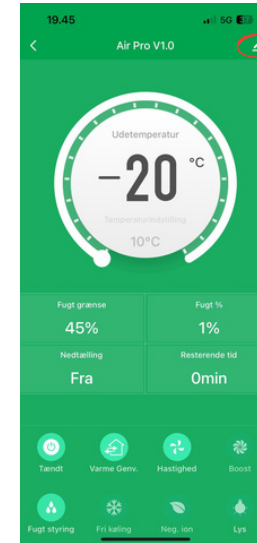
4. Make sure the unit is connected to power but is turned OFF.

Press and hold the ON/OFF button on your unit for 5 seconds – the status indicator on the unit will blink red slowly, indicating that it has entered Wi-Fi pairing mode and can now be connected in the app.

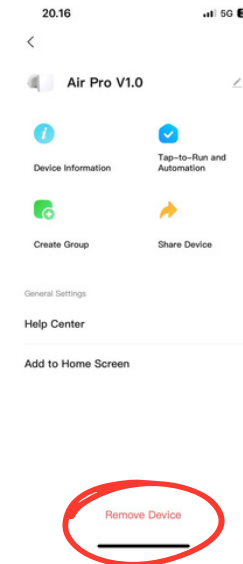
5. Then tap the “+” symbol in the top right corner and select “Add Device.”

The app will search for the fan – select your fan and add it to the app.

## ► CANCELLATION OF WIFI-MODE



1. Click on the red-circled area shown in the image above.



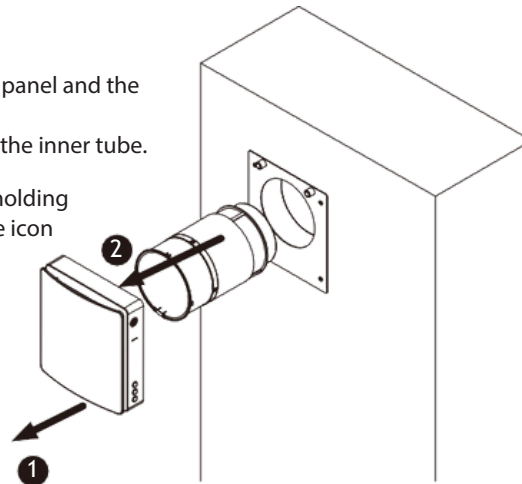
2. Then click on Remove Device.

► MAINTENANCE

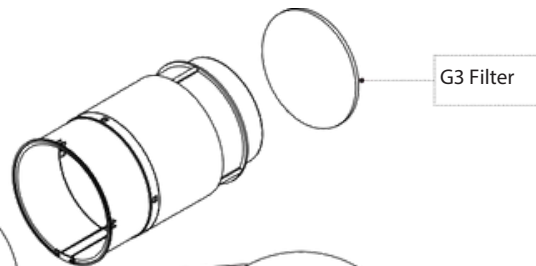
After disconnecting the power supply, the front panel and the inner duct can be removed from the wall.  
Remove the F7 filter and the ceramic core from the inner tube.

The filter alarm can be cleared by pressing and holding the filter reset button on the remote control (the icon that looks like a broom).

- The ceramic core should be cleaned at least four times a year. Rinse it with water and allow it to dry completely.
- The F7 filter should be replaced regularly — it is recommended to replace it every 6–12 months. (The ceramic core is fragile and should be pulled out carefully to avoid damage.)



The F7 filter is not washable and should be vacuumed or replaced when it becomes dirty. Contact a distributor or dealer to purchase replacement filters.



The ceramic ball heat exchanger

The ceramic core can be rinsed directly with water. After rinsing, it should be left to dry completely.



Even with regular maintenance, it may not be possible to completely prevent dirt buildup on the surfaces of the ceramic core.

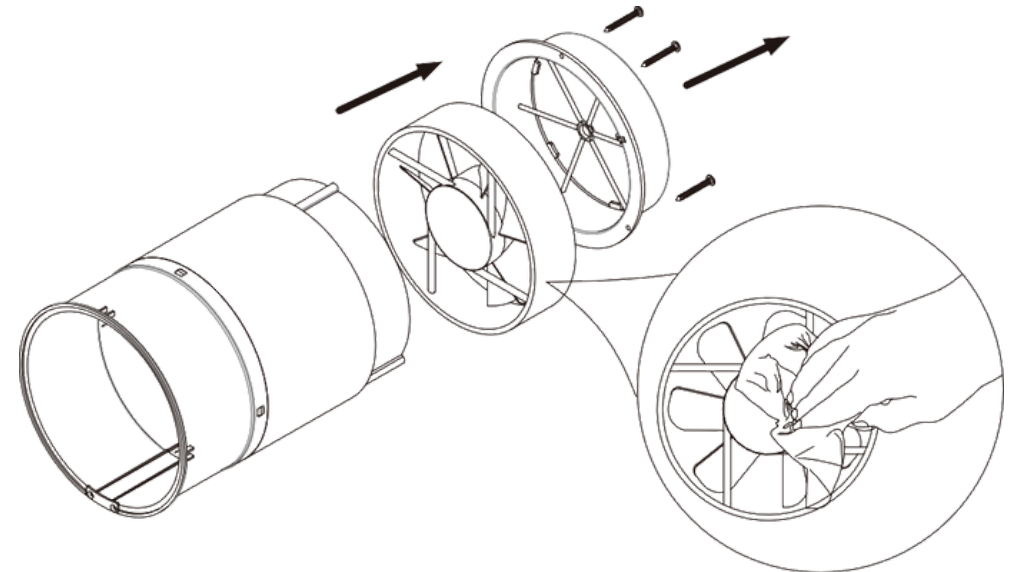
The ceramic core should be cleaned regularly and vacuumed at least once a year.



Clean the coarse filter at least four times a year. The user can vacuum or brush the coarse filter. Contact your dealer to purchase replacement filters.

Fan maintenance (once a year)

Remove the fixed bracket from the inner duct and take out the fan.  
Clean the impeller blades using a soft brush, cloth, or vacuum cleaner.  
Do not use water, abrasive cleaners, solvents, or sharp objects.  
The impeller blades should be cleaned once a year.



► STORAGE AND TRANSPORT REGULATIONS

Store the fan in the manufacturer's original packaging in a dry location.  
Handle the fan with care during transport — do not drop or throw the box.  
Transportation is permitted as long as the fan is protected from impacts, shocks, and vibrations.

## ► TROUBLESHOOTING

Problem	Possible cause	Troubleshooting/Solution
Fan does not start	No power supply.	Ensure the fan is properly connected to the power supply, and make any necessary corrections if required.
	The motor is stuck, or the fan impeller is blocked.	Turn off the fan. Check the impeller. Clean and restart the fan.
Low airflow	Low fan speed.	Set a higher speed.
	Filter, fan, raincover or ceramic core is blocked	Clean or replace the filter, clean the fan and the ceramic core. See maintenance section, page 24.
Noise, vibration	The impeller is dirty.	Clean the impeller.
	Loose screws on the fan housing or outer cover.	Tighten the screws on the fan or the outer cover.
Master-slave pairing failed	Master-slave units are set with different controllers.	According to the manual, use the same remote control for configuring the master-slave units.
	The fan is installed near a lot of metal or interference sources.	Metal structures or interference sources may weaken the wireless signal.
	Distance between master and slave units is too long, or the wall between them is too thick.	Adjust the installation location according to the distance specified in the manual.
	Other causes.	Reset the master-slave settings (press and hold the RESET button for 5 seconds) and set again after power is restored.
Wi-Fi connection failed	The mobile phone is connected to a 5GHz Wi-Fi network.	Switch to a 2.4GHz Wi-Fi frequency/network to establish a connection.
	Public Wi-Fi (such as in residential complexes or hotels) that requires registration or login.	Configure the Wi-Fi router properly. Or Restart the router.
	No router account or password has been created.	
	The router password was entered incorrectly.	
	The maximum number of connected devices has been exceeded.	
Bluetooth on the mobile phone is turned off.	Activate Bluetooth on the mobile phone.	